

NORTHEAST DIESEL COLLABORATIVE

HUG ENGINEERING

Solutions For Exhaust Gas Purification

Technologies to achieve EPA Tier 4 and IMO 3

First Fit/Aftermarket/Retrofit

John Macaluso
Hug Engineering
Business Development Manager
Mobile Products

HUG Engineering

Hug Engineering, a division of the ElringKlinger Corporation is a worldwide leader in the design, manufacture, installation and service of Exhaust Gas Purification Systems. With over 35 years of experience, our systems are located worldwide. Applications include:

On Highway
Off Highway
Power Generation
Marine
Rail
Stationary
Mining

Hug US began in 2011 supplying On and Off Highway applications in the US. We are presently the largest US supplier of Class 8 truck retrofit DPF applications. We are actively supplying all other markets in the US from our headquarters in Texas.

EMISSION REDUCTION TECHNOLOGIES

DPF – Diesel Particulate Filter - PM

SCR – Selective Catalytic Reduction Using Urea - NO_x

DOC – Diesel Oxidation Catalyst – HC, CO, PM

PORT COMMUNITY

WHAT IS THE “PORT COMMUNITY”?

More than the ships at dock or in the water.

Reducing diesel emissions at the Port workplace benefits the entire surrounding community.

From Drayage Trucks entering and leaving, rail, power generation, yard tractors, harbor vessels and sea going vessels, technology is available to reduce emissions.

Particulate Matter up to 97%

Nox up to 80%

CO and HC up to 90%

PORT COMMUNITY CLEAN AIR TECHNOLOGIES



200 – 5,000 kW
(270 – 7,000 HP)
Soot filter, SCR, Oxi

15 - 650 kW
(20 – 900 HP)
Soot filter, SCR, Oxi

200 – 5,000 kW
(270 – 7,000HP)
Soot filter, SCR, Oxi

1,000 – 40,000 kW
(1,350 – 54,000HP)
Soot filter, SCR, Oxi

DRAYAGE TRUCKS – YARD TRACTORS



On/Off Highway Diesel Particulate Filter Technology

Reductions in PM – HC – CO

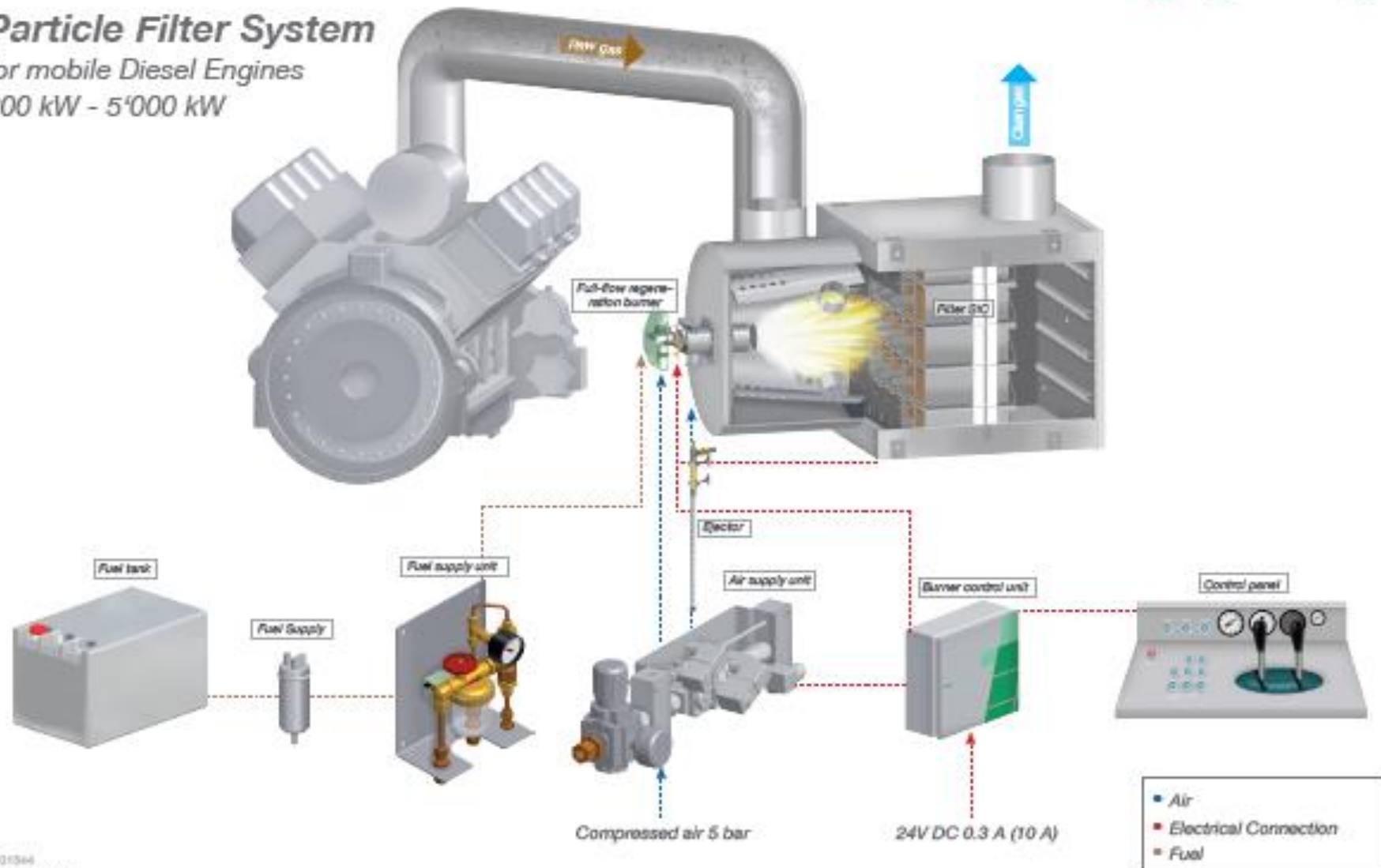


mobiclean[®]

Particle Filter System
for mobile Diesel Engines
200 kW - 5'000 kW

hugfiltersystems.

hugengineering.



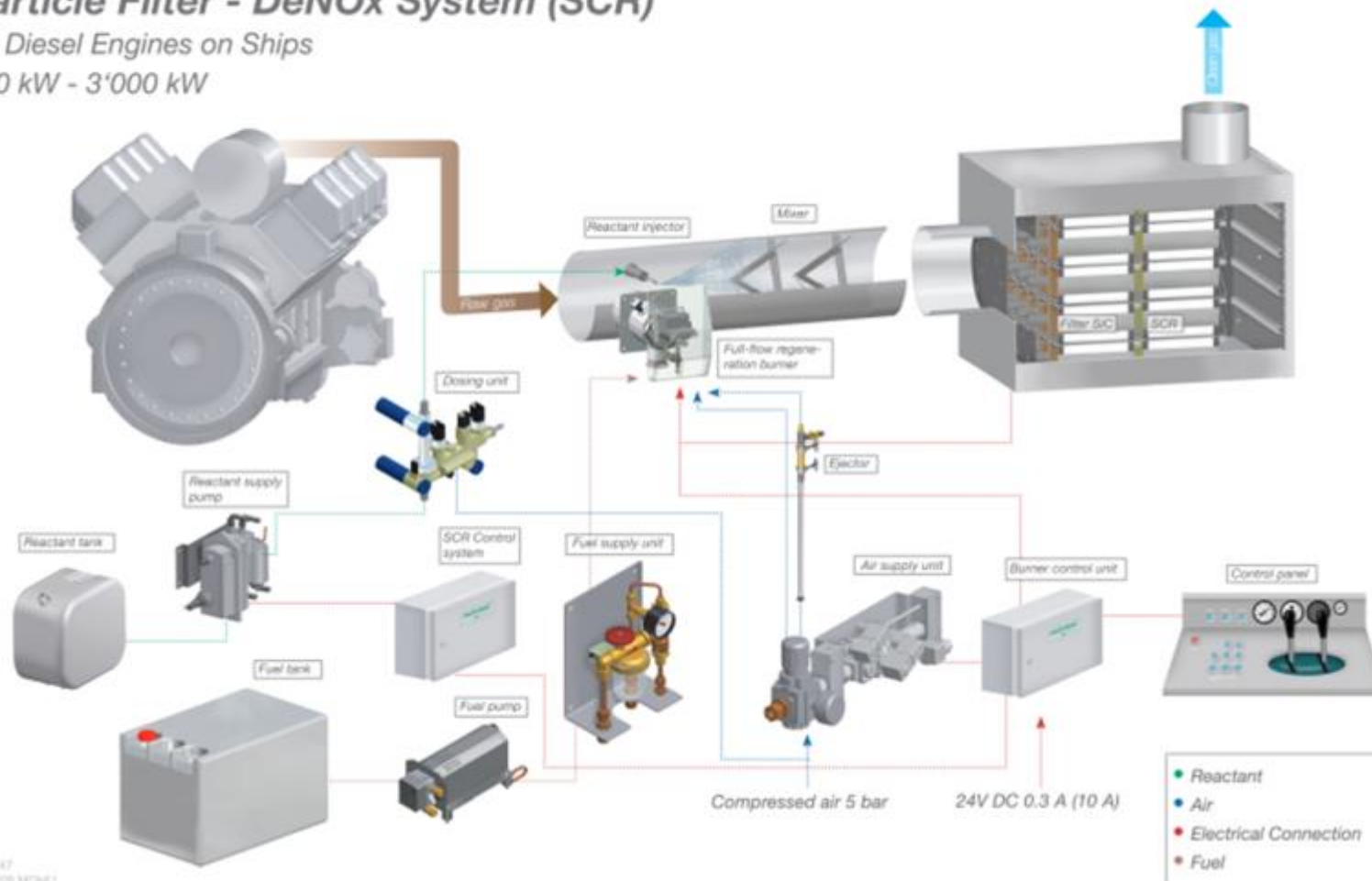
Hug System For EPA Tier 4 or IMO 2016 Compliance

nauticlean®

Particle Filter - DeNOx System (SCR)

for Diesel Engines on Ships

150 kW - 3'000 kW



CARB Showcase (Tier 0 to Tier 4) Work Tug – Port of Long Beach



Who Doesn't Like a Cruise?

hugfiltersystems.
A Company of the ElringKlinger Group



HUG Engineering

QUESTIONS

COMMENTS

APPLICATION IDEAS

2014 SEDC PARTNERS MEETING



John Macaluso
Business Development Manager
Mobile Applications

386-334-4863 (Cell)
386-756-6952 (Office)

John.macaluso@hug-engineering.com
www.hug-engineering.com
www.elringklinger.com