

U.S. Department of Energy Clean Cities Program

Energy, Environment, and Economic Security

- Driving Sustainability with Clean Fuels and Advanced Vehicles
- Building Partnerships to Reduce Petroleum and GHG Emissions in Transportation

➤ **NATIONAL**

➤ **LOCAL**

Erin Russell-Story · Northeast Regional Manager
US Department of Energy · Clean Cities Program
National Energy Technology Laboratory
Erin.Russell-Story@netl.doe.gov · 412.386.7334



<https://cleancities.energy.gov>

Clean Cities: Making the Connections



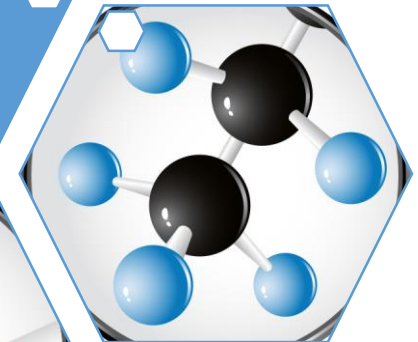
Department of

Local &
National
Partnerships

Information
& Education

Competitively
Awarded
Funding

Technical &
Problem
Solving
Assistance



Clean Cities Coalitions

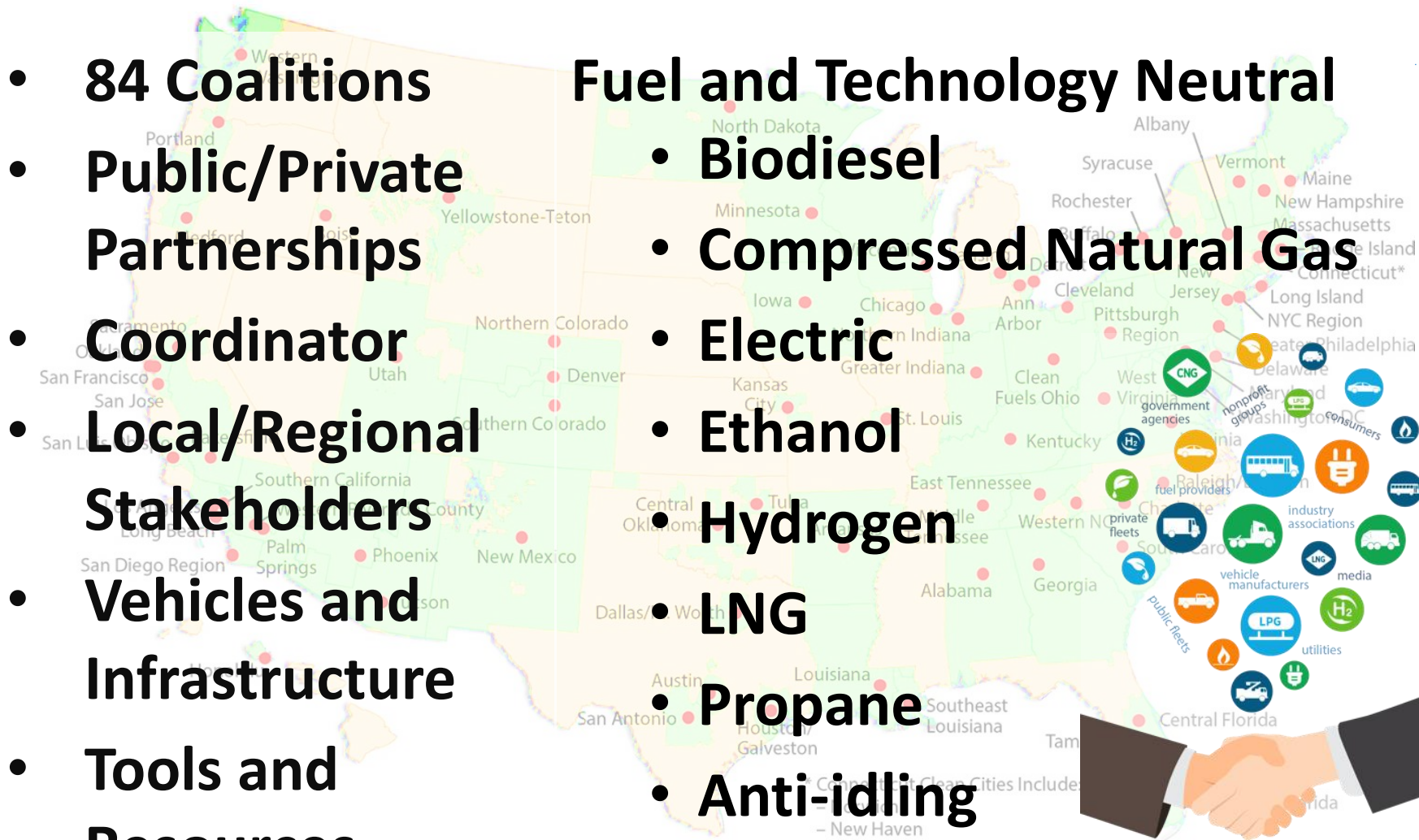


- 84 Coalitions
- Public/Private Partnerships
- Coordinator
- Local/Regional Stakeholders
- Vehicles and Infrastructure
- Tools and Resources

Fuel and Technology Neutral

- Biodiesel
- Compressed Natural Gas
- Electric
- Ethanol
- Hydrogen
- LNG
- Propane
- Anti-idling
- VMT reduction

<https://cleancities.energy.gov>



Map Date: 07/07/15

Tools and Resources



Alternative Fuels Data Center

- Alt Fuel Station Locator
- Laws and Incentives
- Petroleum Reduction Planning Tool
- Case Studies
- Vehicle Cost Calculator
- Alt Fuel/Advanced Vehicle Search
- AFLEET

Clean Cities Website

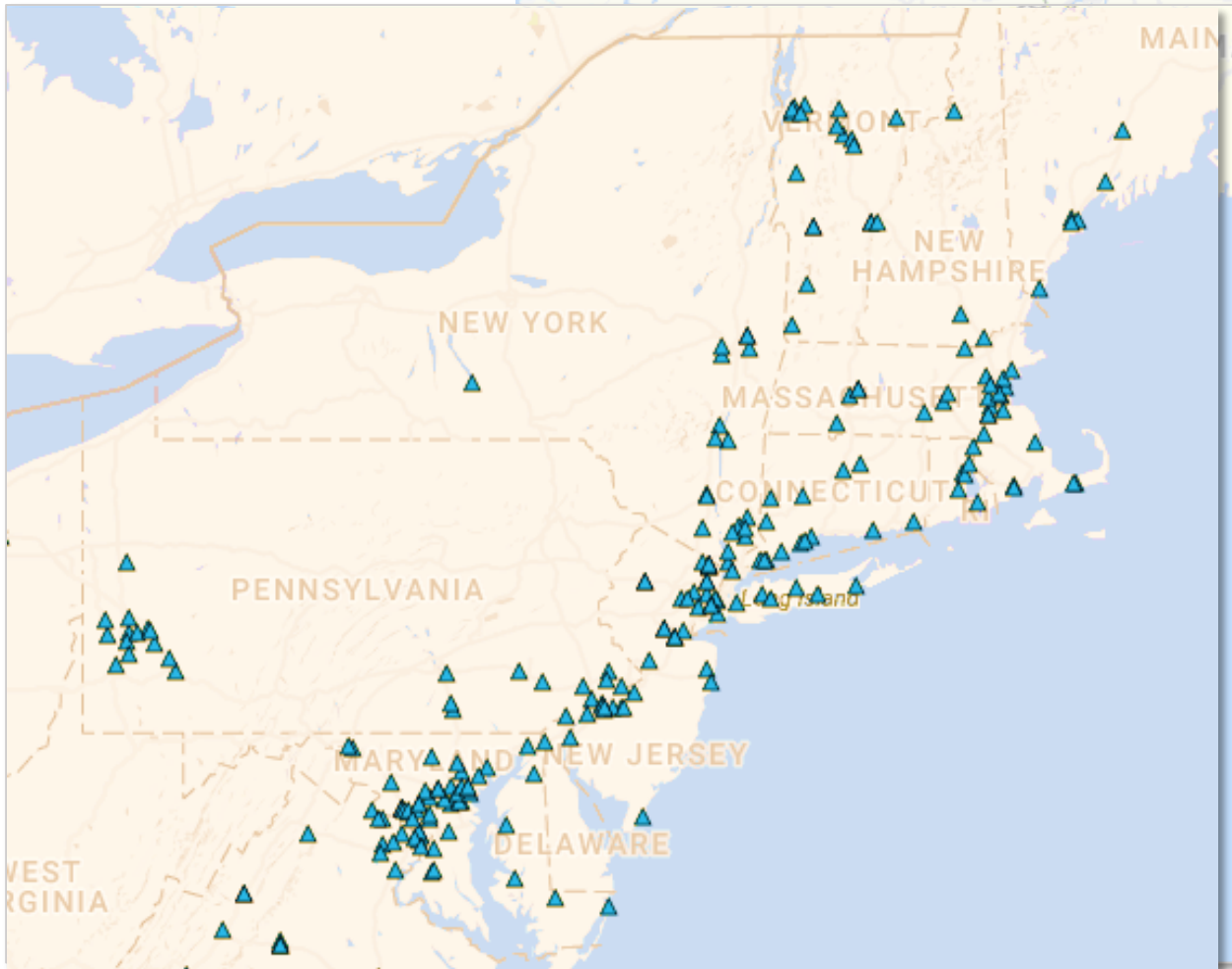
- Locate Clean Cities Coordinators and Contact Information
- Publications
- Technical Assistance and Toolkits



Alt. Fuel Station Locator



<http://www.afdc.energy.gov/locator/stations/>



332 DC Fast Charge Stations in the Northeast:

- CT – 27
- MA – 53
- ME - 10
- MD – 66
- NH - 4
- NJ – 45
- NY – 42
- PA – 53
- RI – 7
- VT -25

*Tesla not included

Truck Stop Electrification



<http://www.afdc.energy.gov/truckstop>

List of Locations by State

(example):

5495 Co Rd 388

Cusetta, AL 36852

Phone: 555-555-3161

Intersection: I-85 Exit 70

Brands: Shorepower (16 bays)

Media: Cable, Internet

Payment: Discover, Gift Card,
MasterCard, VISA

Access: Public - see hours

Hours: 24 hours daily

