

Mega-Ships, Mega-Opportunities

2017 Northeast Diesel Collaboration
August 2017

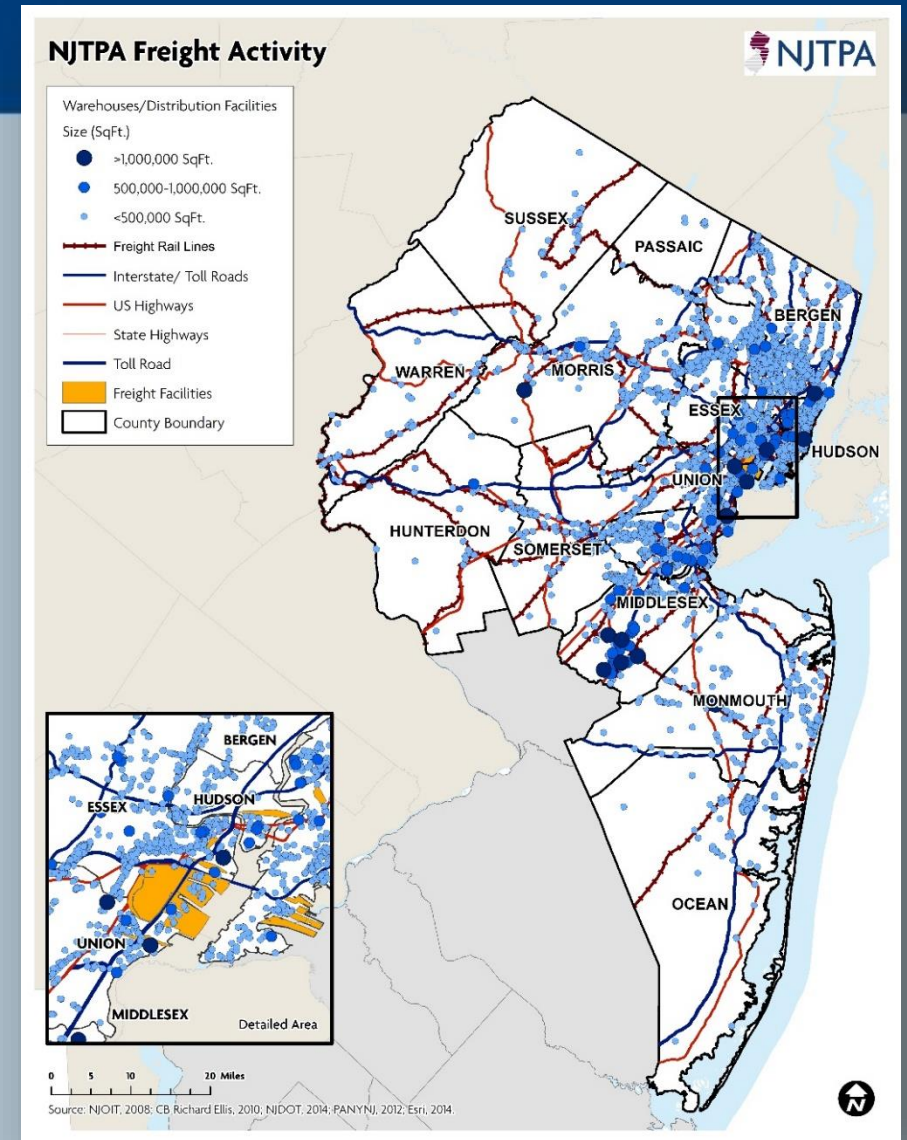


Anne Strauss-Wieder
Director, Freight Planning
North Jersey Transportation Planning Authority



New Jersey is a Key Distribution Node

- 811 million square feet of industrial space in NJTPA area, with 9 million under construction.
- Largest Port on the East Coast – 6.3 million TEUs in 2016.
- Robust Rail Freight Network – 2 Class Is, Conrail, shortlines.
- Extensive Roadway Network
- Newark Liberty International Airport – 10th largest in the US



Examples of NJTPA Freight Initiatives

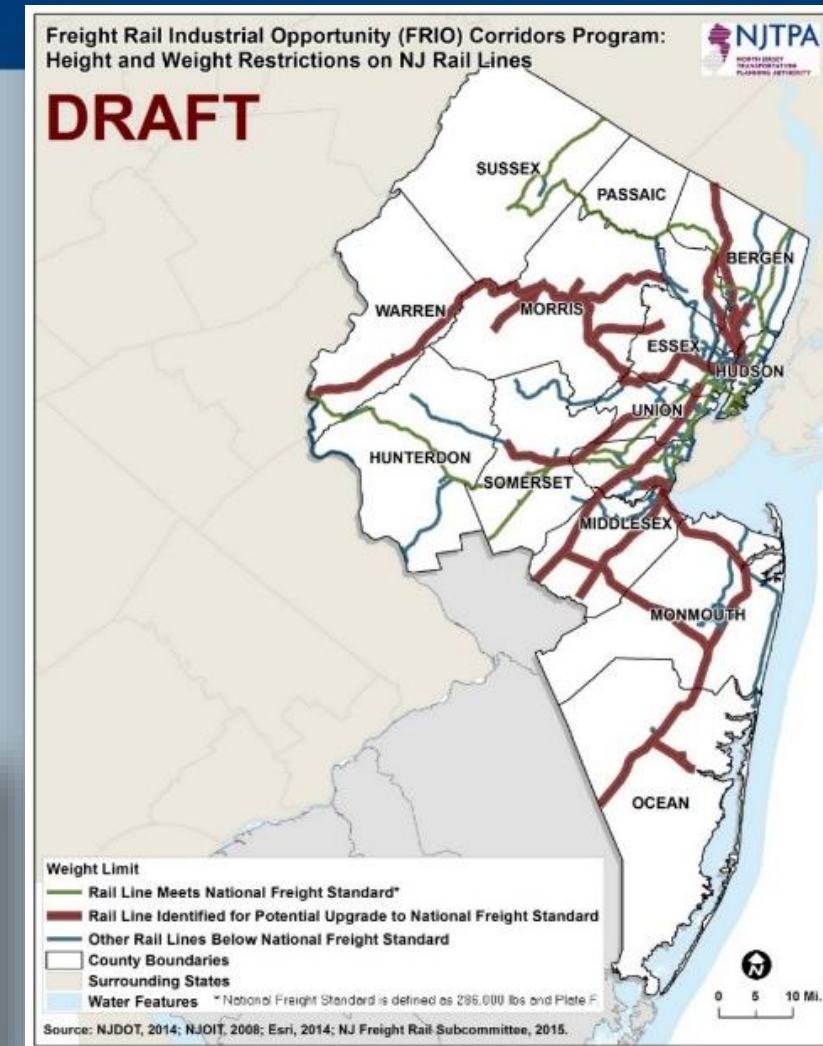
- NJTPA's Freight Initiatives Committee
- Subregion Outreach and Field Visits
- Inventory & Assessment of Waterborne Resources
- Freight Rail Industrial Opportunity (FRIO) Corridors Program
- Pilot Freight Concept Development Program
- Member, Council on Port Performance



Get a New Truck

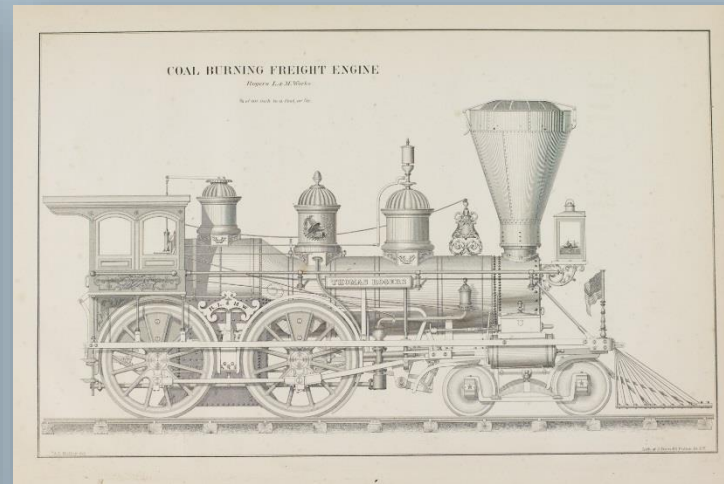
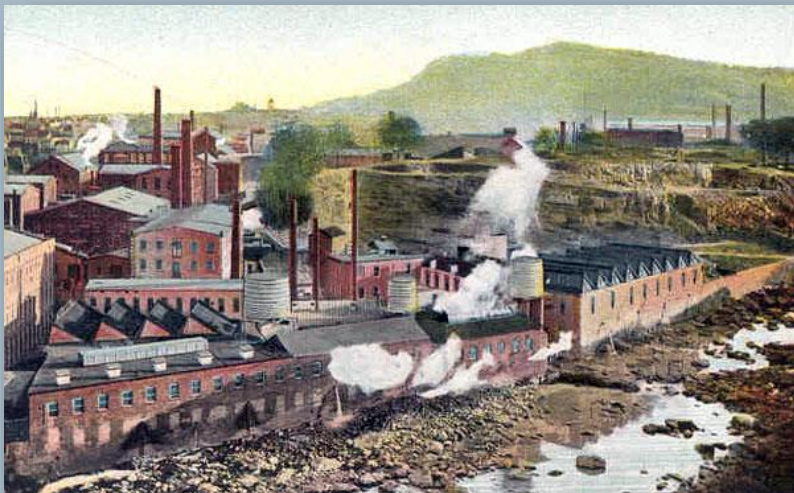
Grants Available to Eligible Truck Owners to Purchase Newer Vehicles

REGIONAL TRUCK REPLACEMENT PROGRAM



A Heritage of Production and Distribution

- Malcolm McLean and the Ideal X
- New Jersey Railroad Company and the Camden and Amboy Railroads



Sources: JOC and Rutgers University

Maritime Activities in the NJTPA Region



Plan 2045 Discussion: What Keeps Supply Chain Professionals Up at Night?

- Managing the challenges of a rapidly evolving retail environment
- Guaranteeing temperature controlled supply chains for pharmaceutical and food products.
- Identifying and undertaking the actions and investments needed to enable all aspects of the freight system to operate 24/7.

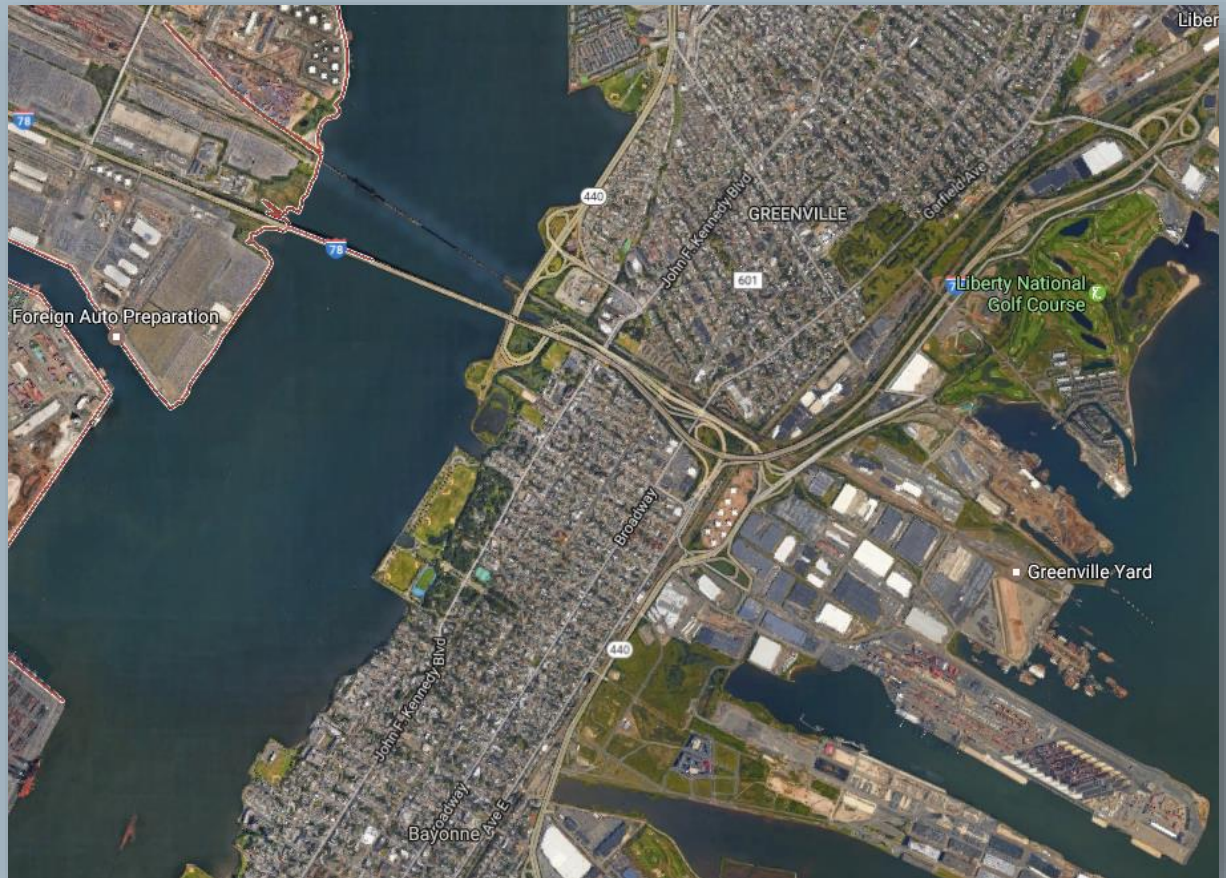


Freight as a Good Neighbor

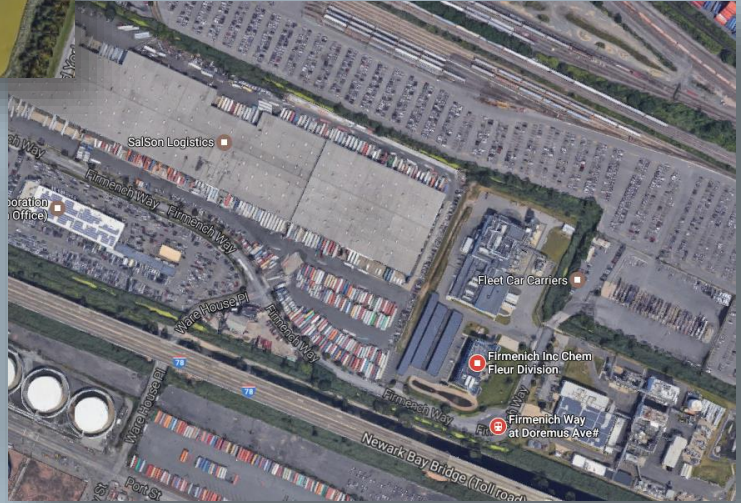
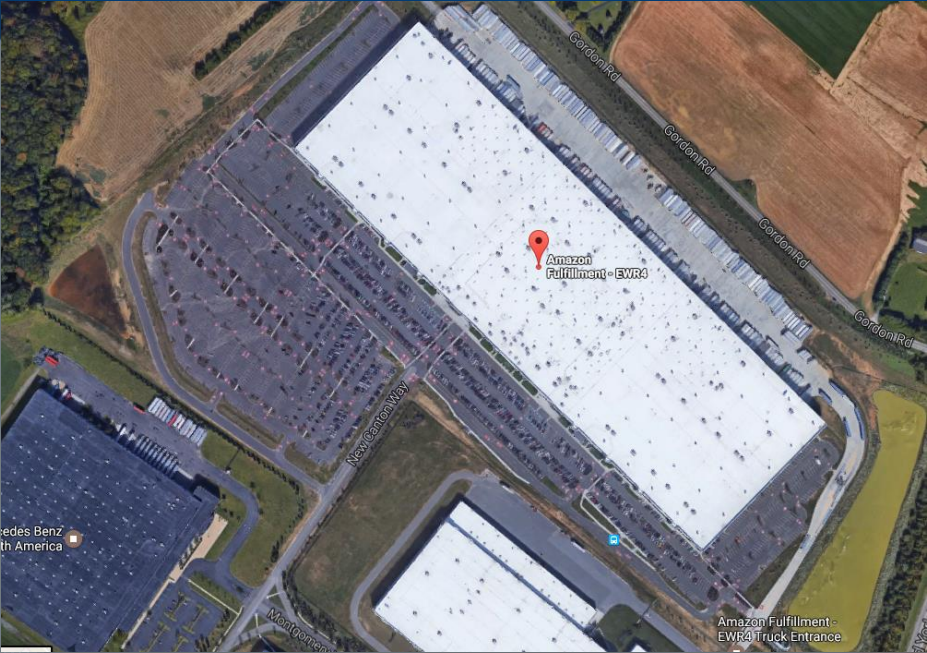
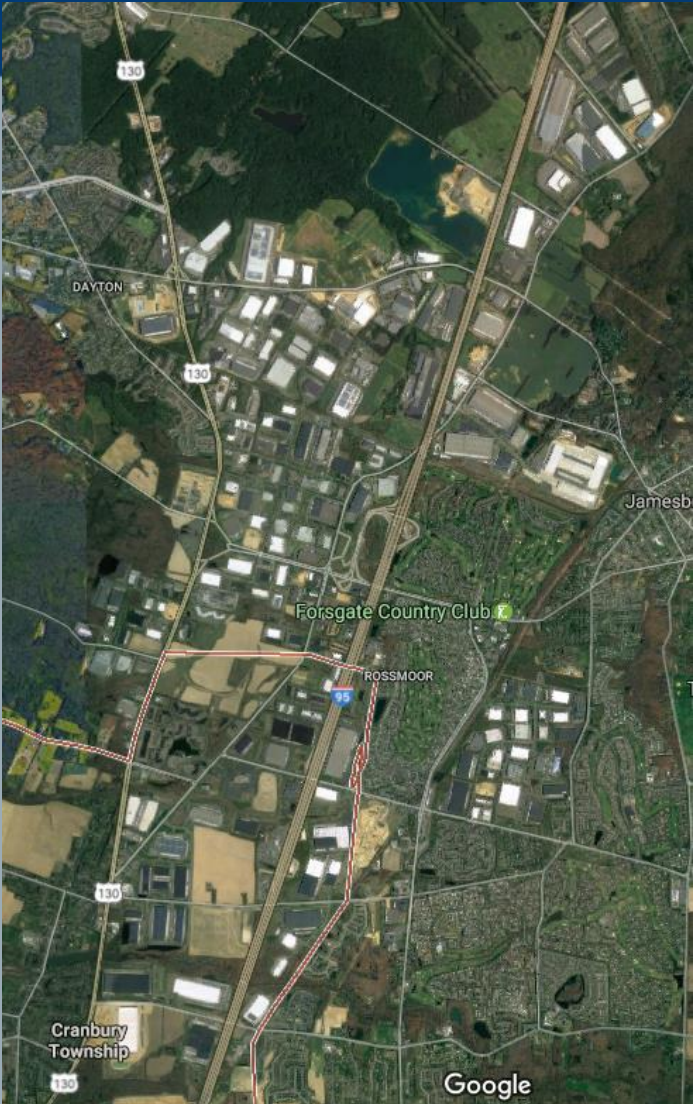
- Community Considerations:
 - Economic development and job opportunities
 - Safety
 - Environment
 - Quality of life



Source: WSJ



Mega-Ships, Mega-Distribution and Production



Mega-Ships, Mega-Opportunities

- Workforce opportunities
- Increasing awareness of job opportunities on- and off-Port
- Training
- Linking workers to job sites

WORK AREAS | EXPLORATION

TRANSPORTATION & PORT OPERATIONS

TRUCKING

In New Jersey, the majority of goods are moved by 100,000 trucks and tractor trailers. Of more than 100 million tons of goods moved each year, 70% move by truck. While delivery vans and small trucks figure more accurately for a significant portion of annual freight, tractor-trailer trucks haul more than a large volume of goods. The basic truck drivers include short-haul drivers who drive local or regional routes and most from east to west. Long-haul truck drivers take their cargo on long-distance routes and across the country. Truck drivers often use their own truck and receive their own business by contracting their services to other companies, or drive a truck leased by their employer. While many truck drivers work for trading companies, many others work for companies in a wide variety of industries.

AIR

This sensitive or highly valuable cargo is not flown from coast to coast but is flown by air from New Jersey Liberty International Airport. This cargo, which includes medicine, and processed by workers using special facilities, including high capacity for handling refrigeration and other materials with a high level of efficiency. In 2006, NJIA processed 692,712 tons of cargo.

RAIL

New Jersey's approximately 1,200 miles of rail freight tracks account for 10% of the country's significant amount of the goods transported. Most of the rail freight tracks are located in the state's north and west. Although transportation by rail is less flexible than transportation by truck or sea, many freight companies offer rail services. It is more efficient and cost-effective. The rails is used by 10 different sectors: regional railroads and 3 national carriers. Major commodities shipped by rail include pharmaceuticals, including plastic pellets, construction materials, horticultural, raw materials, and refined goods for manufacturers.

COASTAL SHIPS/ OCEAN PORTS

Large volumes of goods heading through both northern and southern New Jersey ports are one of the most highly visible TLD industry employers. The Port of Newark and Elizabeth, the Port of Camden and the Port of Salem, connect the state to the global economy with large container ship arrivals each day from Europe, South America, and all parts of the world. In 2006, more than 175,000 tons of goods, worth over 12 billion dollars, passed through the port. The port is equipped with a wide variety of cargo, including vehicles, large containers, liquid and dry bulk, and others.

Workers on the ship's 24-houring terminal, off-dock containers and bulk goods from ships and transfer them to trucks and vans for delivery to customers in the state and throughout the region. Safety requirements include that other skilled workers inspect, load, and unload cargo and other heavy machinery.

WAREHOUSING & DISTRIBUTION

WAREHOUSE FLOOR

Warehouse personnel ensure that materials are placed in designated areas of the warehouse to help customer orders accurately, safely and efficiently.

INTERNAL OPERATIONS

Internal operations employees work within the distribution center, assisting order in the receipt and distribution of goods. Job effectiveness is the distribution of labor and making the entire workflow.

MAINTENANCE

Maintenance employees support operations by ensuring that the equipment required for the receipt and distribution of products is maintained and repaired in a timely manner. They also play a major role in ensuring compliance with safety standards throughout the various operating areas.

Automotive Body and Painted Repairs
 ☐ Certificate, General Others Items
 \$ 142,000 - \$48,000
 E: |||

Boat and Truck Mechanics, Diesel Engine Specialists
 ☐ Certificate, General Others Items
 \$ 142,000 - \$48,000
 E: |||

Mobile Heavy Equipment
 ☐ Certificate
 \$ 142,000 - \$48,000
 E: |||

Automotive Mechanics and Service Technicians
 ☐ Certificate, General Others Items
 \$ 142,000 - \$48,000
 E: |||

CORPORATE ADMINISTRATION

SALES, MARKETING & CUSTOMER SERVICES

To compete, the companies in most industries must continually develop products, control costs, increase sales, and ensure that their customers have a good experience with the company. Employees in these areas attract buyers and purchasing agents to a company's distribution or distribution centers, communicate directly with customers, resolve customer issues, identify storage plans with existing the company to new customers, and advise clients on how services can help their business grow.

INFORMATION TECHNOLOGY

The TLD industry is rapidly becoming more and more dependent on computers to manage their business, to plan the movement of goods, and to track their goods from when they are picked up to when they are delivered. As a result, many companies depend on computerized systems, and distribution must have employees who can provide technical support to other workers, troubleshoot the installation of up-to-date computer software and hardware, and design, implement, and maintain information technology systems.

HEALTH, SAFETY & ENVIRONMENTAL MANAGEMENT

The handling of large quantities of goods and materials in handling goods, if not handled can be dangerous. Companies do not have rigid controls for the health and safety of employees and for the protection of the environment. As a result, health, safety, and environmental managers play a critical role in TLD.

SUPPLY CHAIN MANAGEMENT & LOGISTICS

Supply chain managers are responsible for tracking goods from their raw materials (such as chemicals, oil, and paper) to a final form that customers will buy or use. They track the movement of goods, identify and manage the companies that supply the raw materials and identify and manage all of the companies that will move the raw materials and the final products.

As one of the largest occupations within supply chain management, logistics uses computer systems and a lot of data to ensure that a company's products, whether they are goods, information, or energy reach the customer with minimum cost of resources and time. Logistics help determine if goods should be made by truck, sea, air, or ship and help determine the route that the product will take when moving from goods to point B.

LEARN MORE AT WWW.NJITLD.NJ



Sources: NJ.com, Greater Mercer TMA and NJDO

Mega-Ships, Mega-Modes

- Optimize the use of all modes for off-Port distribution.
- Advance environmental initiatives.

Get a New Truck

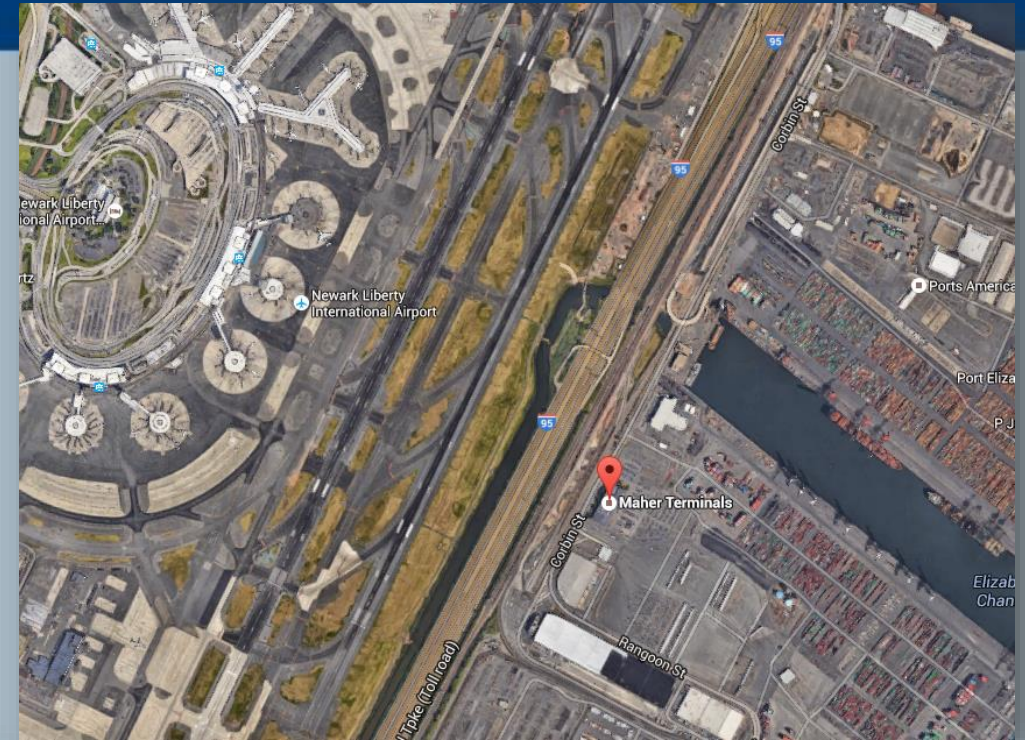
Grants Available to Eligible
Truck Owners to Purchase
Newer Vehicles

REGIONAL TRUCK REPLACEMENT PROGRAM



2045 Supply Chain Roundtable: Perceived Strengths of the Region

- Size of region's consumer market and demands it generates
- Extensive freight infrastructure
- Willingness to work together to address issues



Council on Port Performance Creates
Workforce Development Team



Thank You



 Find us on
Facebook!

follow us on
twitter 

 Find Us On
Instagram

 **SUBSCRIBE**
TO OUR CHANNEL

Defining the Vision. Shaping the Future.

NJTPA

**NORTH JERSEY
TRANSPORTATION
PLANNING AUTHORITY**

Anne Strauss-Wieder
Director, Freight Planning
(973) 639-8404
Strauss-Wieder@njtpa.org

