

USEPA DERA PORTS PROJECT

Charles Liou, Manager, Environmental Initiatives

October 18, 2017

THE PORT DISTRICT

25 miles radius from the Statue of Liberty

Busiest transportation system in the Nation

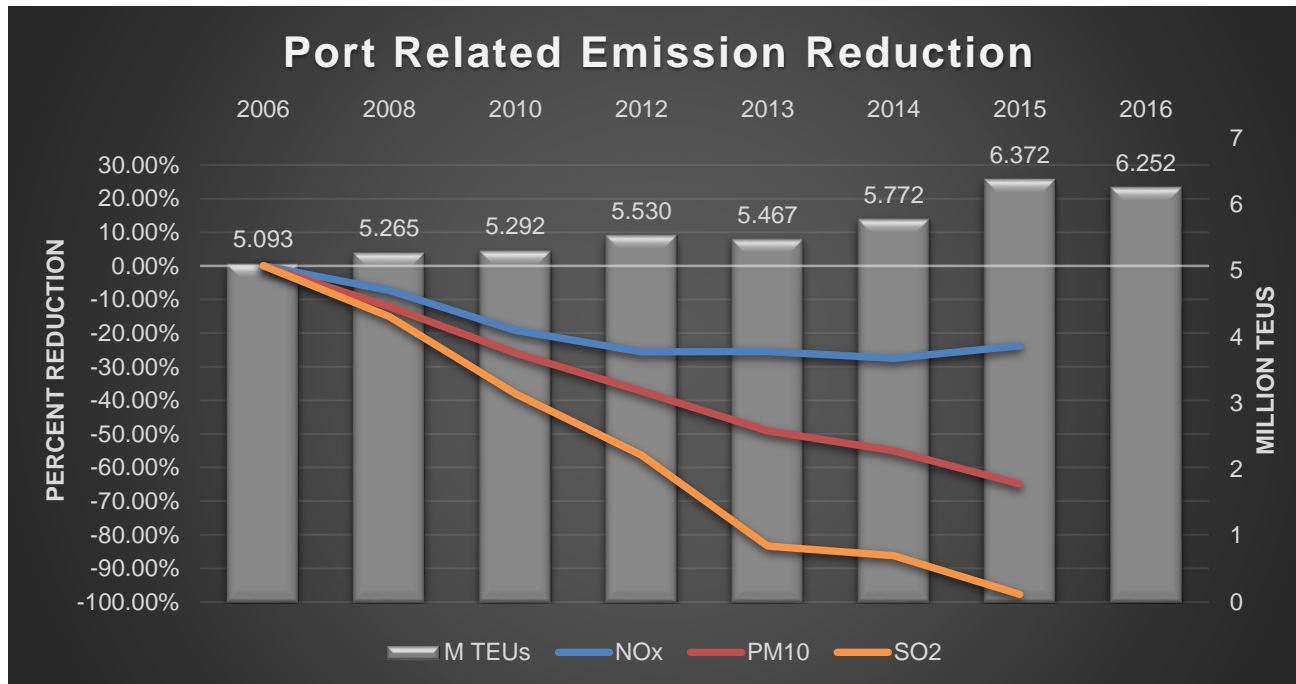
- Airports
- Bridges & Tunnels
- Bus & Rail Transits
- Real Estate
- Seaports





CLEAN AIR STRATEGY

- Committed \$37M voluntarily and secured \$31M in grant funding since 2009
 - Diesel Emission Reduction Act (15M)
 - Congestion Mitigation Air Quality (12M)



A CLEAN AIR STRATEGY FOR THE PORT OF NEW YORK & NEW JERSEY

REDUCING MARITIME-RELATED AIR QUALITY IMPACTS ON HUMAN HEALTH AND THE ENVIRONMENT

OVER **6,600 TONS*** PER YEAR OF DIESEL PARTICULATE MATTER, NITROGEN OXIDES, AND OTHER HARMFUL EMISSIONS ELIMINATED

83,900 TONS* PER YEAR OF GREENHOUSE GAS EMISSIONS REDUCED—EQUIVALENT TO TAKING OVER 16,000 CARS OFF THE ROAD FOR A YEAR**

REPOWER PRIVATE HARBOR CRAFT

BROOKLYN CRUISE TERMINAL SHORE POWER

CLEAN VESSEL INCENTIVE PROGRAM

LOW-SULFUR DIESEL FUEL INCENTIVE PROGRAM

FLEET MODERNIZATION PROGRAM AND ELECTRIC-POWERED EQUIPMENT

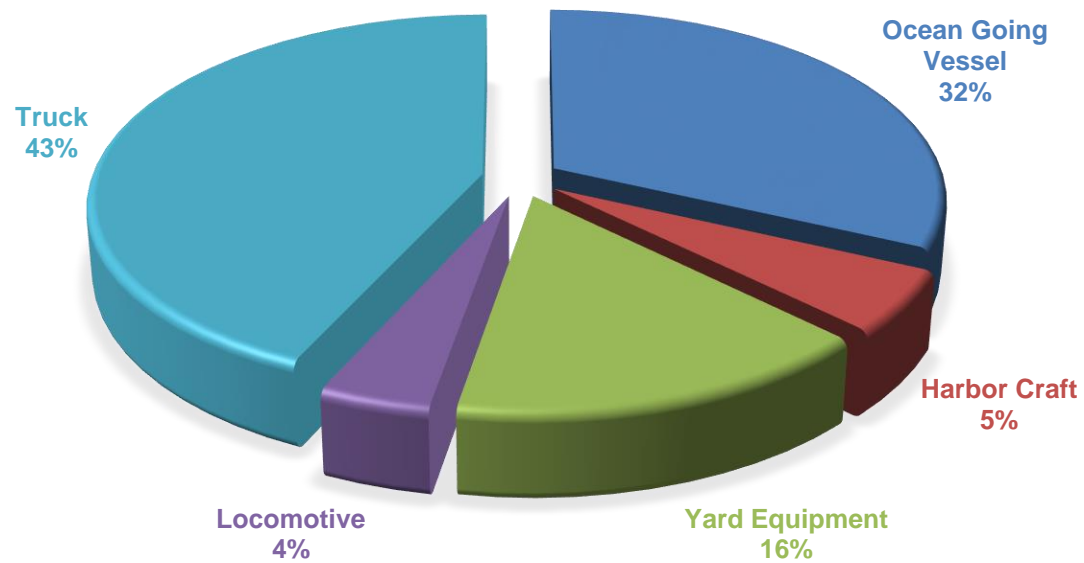
TRUCK REPLACEMENT PROGRAM

GENSET RETROFITS

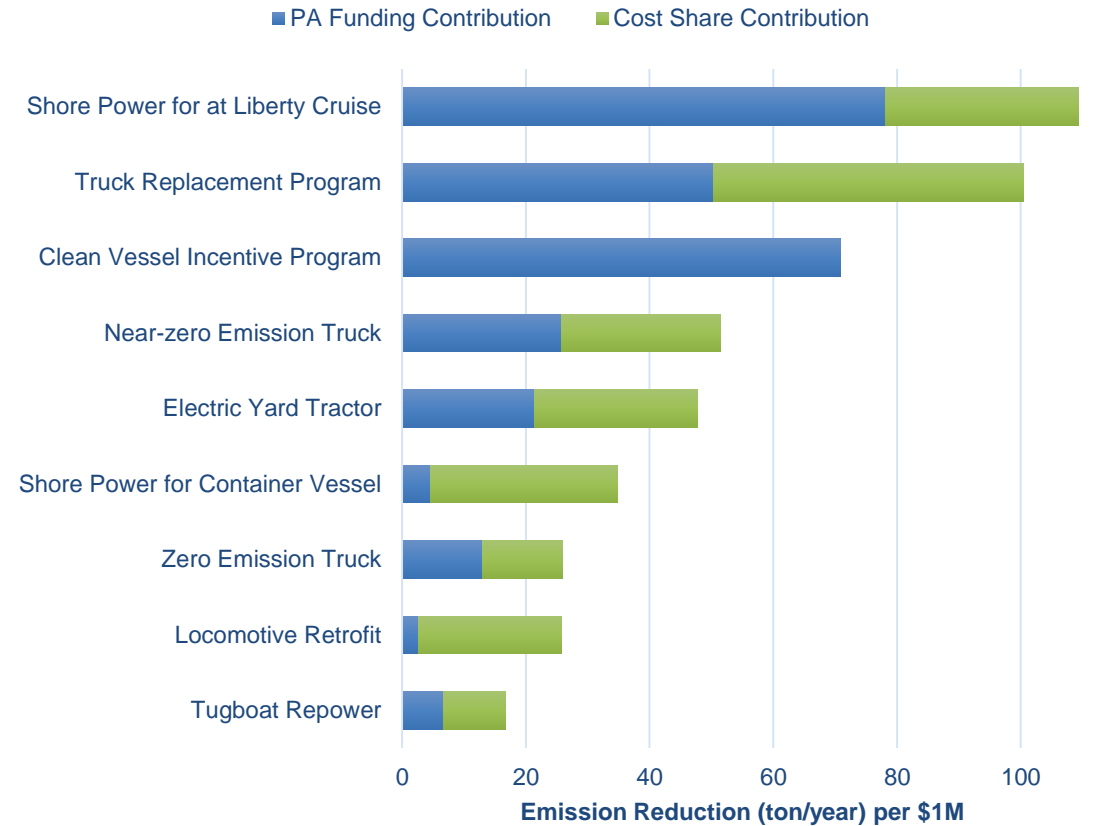
* Reduction as of the 2014 Multi-Facility Emissions Inventory from the 2006 baseline.
** Estimated using the U.S. EPA Greenhouse Gas Equivalencies Calculator available online at <https://www.epa.gov/energy/greenhouse-gas-equivalencies-calculator>

PORT EMISSIONS

DISTRIBUTION BY SECTOR



Project Effectiveness

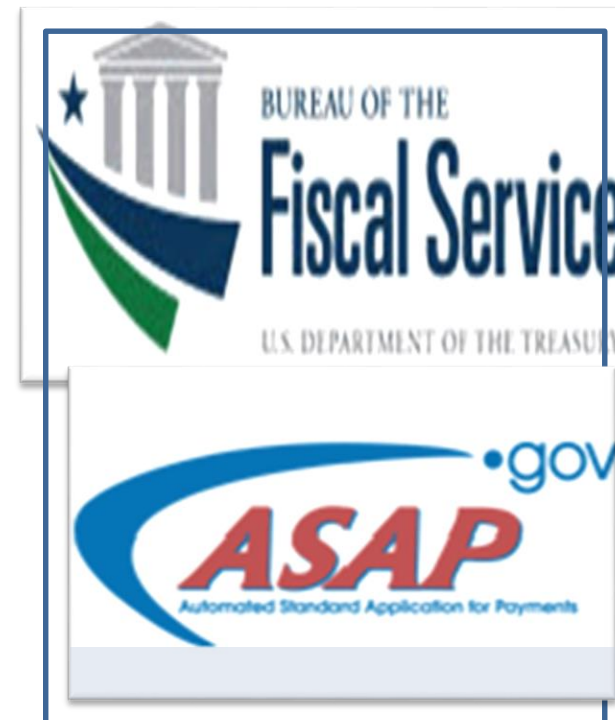


DIESEL EMISSION REDUCTION ACT

Application

- Grant.gov
 - 1st Phase
 - 2 months
 - 10 pages
- Direct Communication
 - 2nd Phase
 - 3 weeks
 - 10 forms

Reimbursement



TRUCK REPLACEMENT PROGRAM

2009-2013

- Eligibility
 - Active (150 times/year)
 - 1994- (Later 2003-)
- Cost-share
 - 25%
- Replacement
 - 2004+ (Later 2007+)
- Loan

2015-Present

- Eligibility
 - Active (150 times/year)
 - 2006-
- Cost-share
 - 50% max \$25,000
- Replacement
 - 2011+

INTERIM RESULTS

FY2009 & FY2010 DERA/ARRA

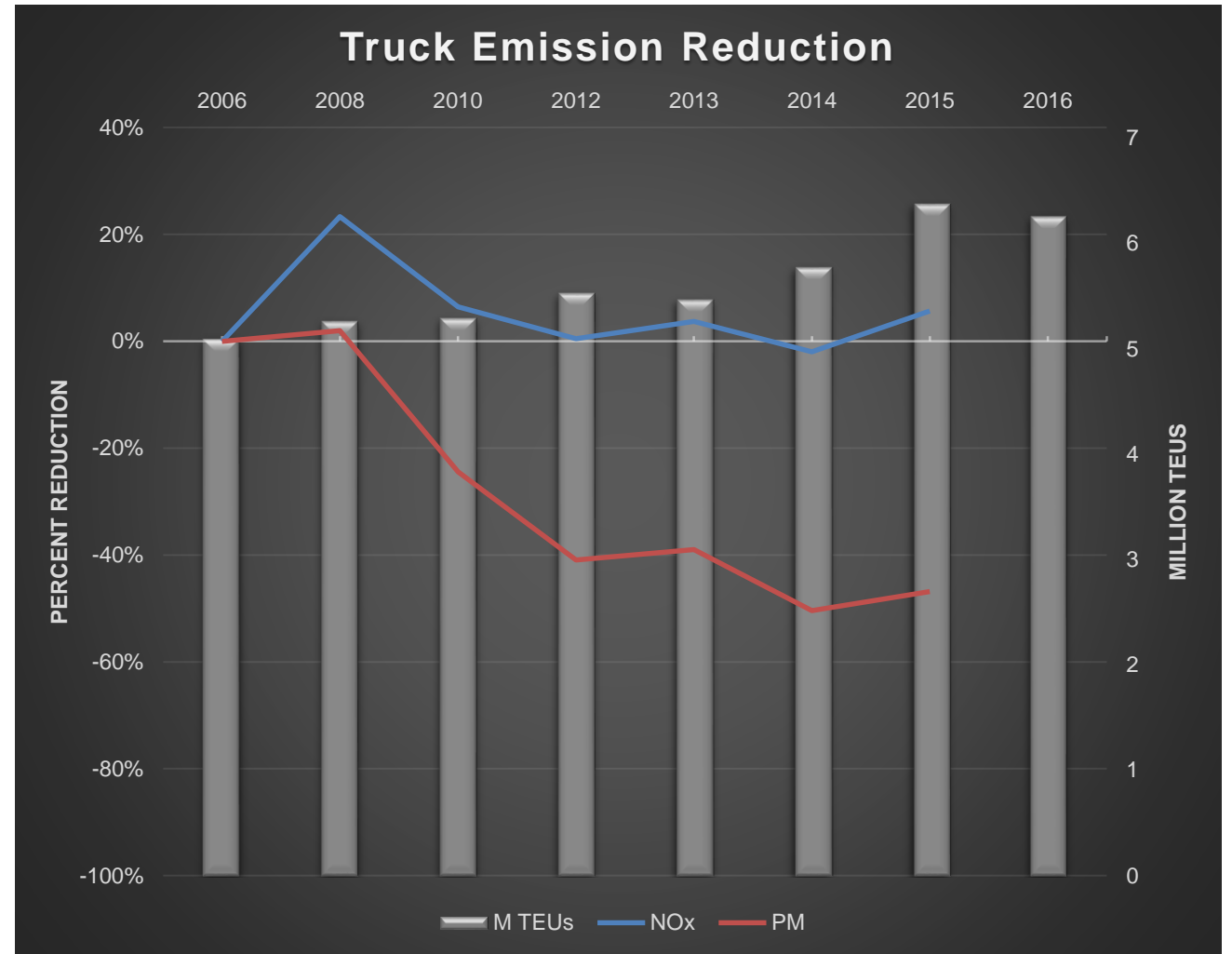
- 429 Trucks

FY2015 DERA

- 40 Trucks
 - 48.8 Tons/year NOx
 - 2.3 Tons/year PM2.5

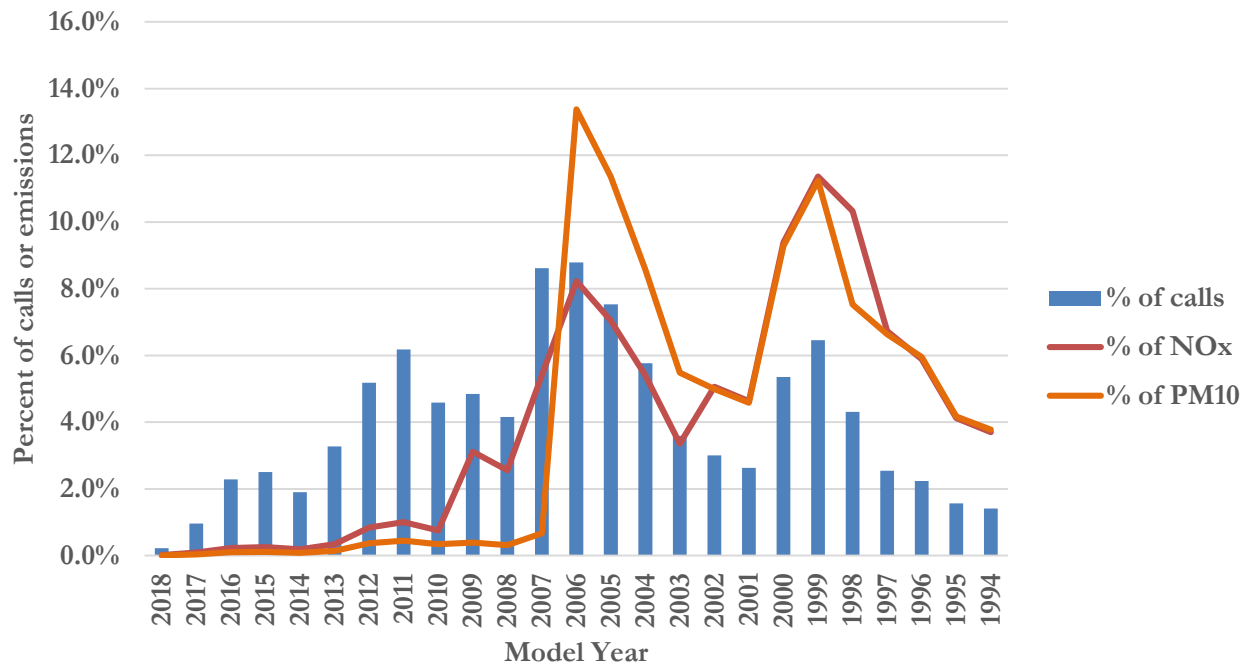
FY2016 DERA

- 72 Trucks (Estimated)
 - 63.8 Tons/year NOx
 - 2.9 Tons/year PM2.5



Next Step

Question?



AIR EMISSIONS

■ NOx ■ Phase Out

